

PLEASE NOTE

- Electrical equipment should be installed, operated, serviced, and maintained only by qualified personnel.
- No responsibility is assumed by Schneider Electric for any consequences arising out of the use of this material.

请注意

- 电气设备的安装、操作、维修和维护工作 仅限于合格人员执行。
- Schneider Electric 不承担由于使用本资料所引起的 任何后果。

⚠ ⚠ DANGER / 危险



HAZARD OF ELECTRIC SHOCK, EXPLOSION, OR ARC FLASH

Disconnect all power before servicing equipment.

Failure to follow these instructions will result in death or serious injury.

电击、爆炸或弧闪的危险

在此电力设备上工作时, 请先切断所有电源。

未按说明操作将导致人身伤亡等严重后果。

⚠ ⚠ WARNING / 警告

HAZARD OF FIRE OR ELECTRIC SHOCK (FOR CONTACTOR WITH UL HI-FAULT SHORT CIRCUIT CURRENT RATINGS ONLY)

- The opening of the branch-circuit protective device may be an indication that a fault current has been interrupted.
- To reduce the risk of fire or electric shock, current-carrying parts and the other components of the controller should be examined and replaced if damaged.

Failure to follow these instructions can result in death, serious injury, or equipment damage.

可能有火灾或者触电的危险 (仅限UL高故障短路电流额定值的接触器)

- 支路保护设备断开, 表明故障电流已被中断。
 - 为降低火灾或触电风险, 应检查带电部件和 其他控制元件, 如有损坏, 需及时更换。
- 未按说明操作可能导致人身伤亡或设备损坏等严重后果。**

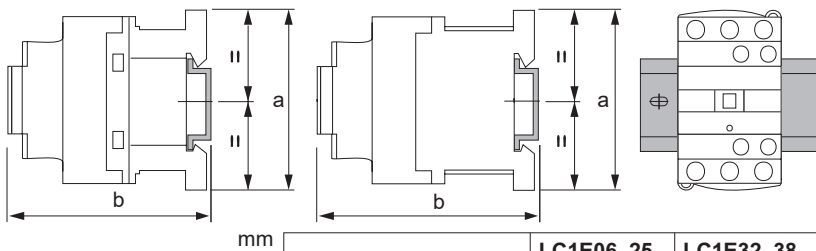
"For motor starting use Schneider Electric Easy TeSys Protect - TVS overload relays."

电动机起动请使用施耐德电气 Easy TeSys 保护 TVS 系列热过载继电器。

LC1E06-38 ...

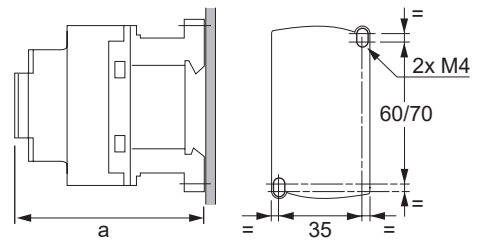
On mounting rail AM1 DP200, DR200/AM1 DE200

导轨安装: AM1 DP200, DR200/AM1 DE200

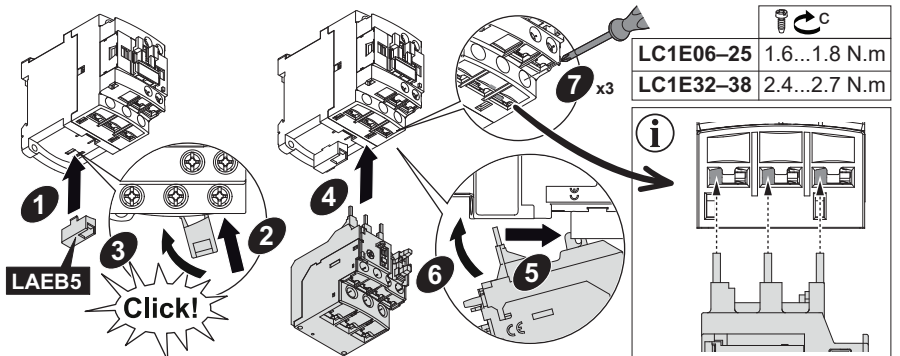
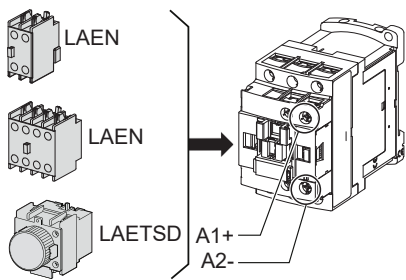


	LC1E06-25	LC1E32-38
a	77	85
b (AM1 DP200 / DR200)	95	101
b (AM1 DE200)	103	108

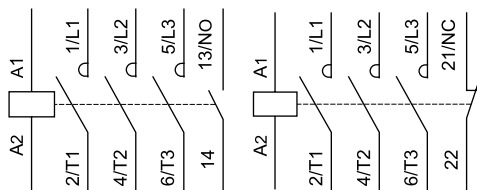
Panel mounted / 面板安装

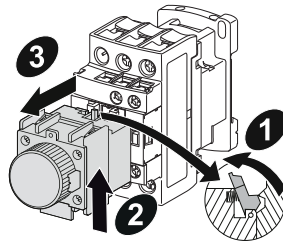
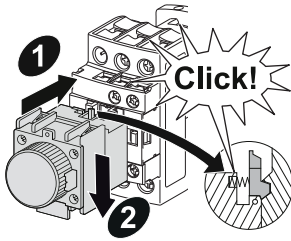


	LC1E06-25	LC1E32-38
a	93	99



LC1E06-38 ...





		d				l
		LC1E06/09/12	LC1E18	LC1E25	LC1E32/38	LC1E●●/LAEN●●
	[mm]	8	8	8	10	8
	[in.]	5/16	5/16	5/16	3/8	5/16
	[mm²]	1...4	1.5...6	1.5...6	1.5...10	1...4
	[mm²]	1...4	1.5...6	1.5...6	1.5...6	1...4
	[mm²]	1...4	1...4	1...6	1...6	1...4
	[mm²]	1...2.5	1...2.5	1...4	1...4	1...2.5
	[mm²]	1...4	1.5...6	1.5...6	1.5...10	1...4
	[mm²]	1...4	1.5...6	1.5...6	1.5...6	1...4
	AWG	10...18	8...18	8...18	6...14	10...18
	Cu 75°C	Cu 75°C	Cu 75°C	Cu 75°C	Cu 75°C	Cu 75°C
	[mm]	6	6	6	6	6
	[in.]	15/64	15/64	15/64	15/64	15/64
	N.m	1.6...1.8	1.6...1.8	1.6...1.8	2.4...2.7	1.6...1.8
	lb-in	15	15	15	22	15