

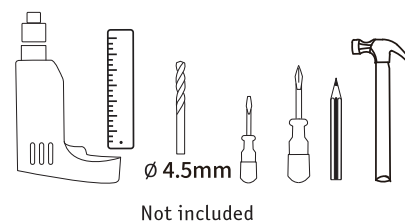
rabalux®

78042

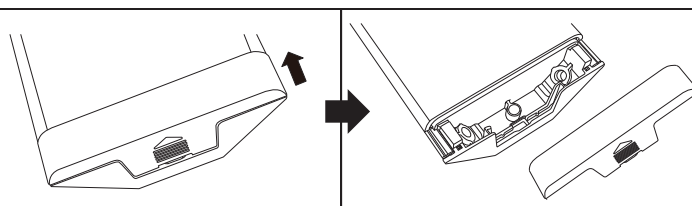
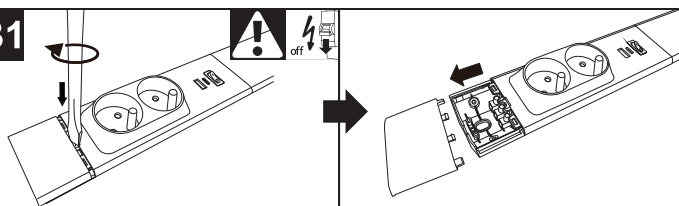


X1

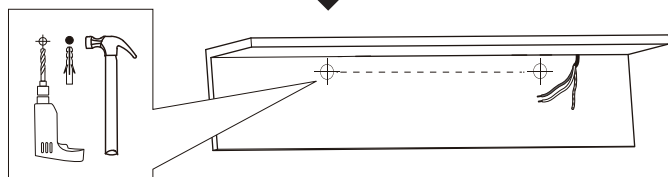
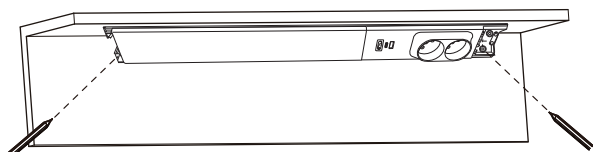
⊕  X2 ⊕  a X2 ⊕  b X4



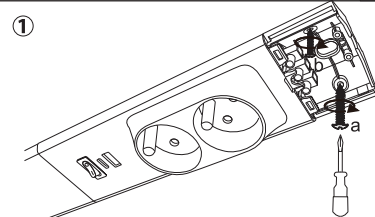
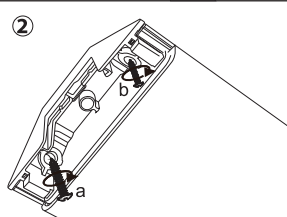
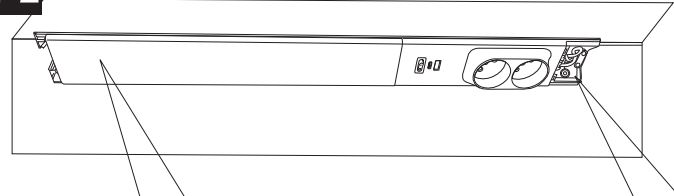
B1



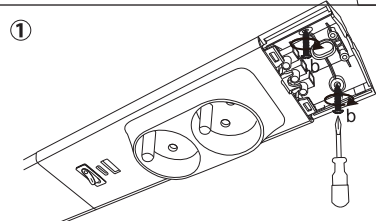
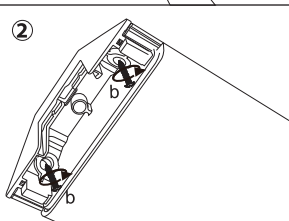
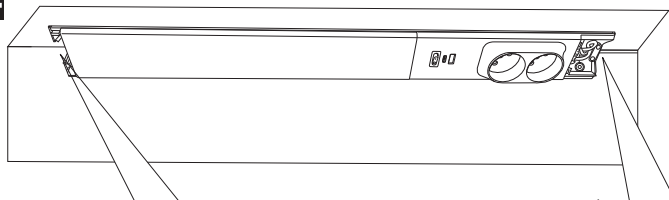
C1-1




C1-2




C2

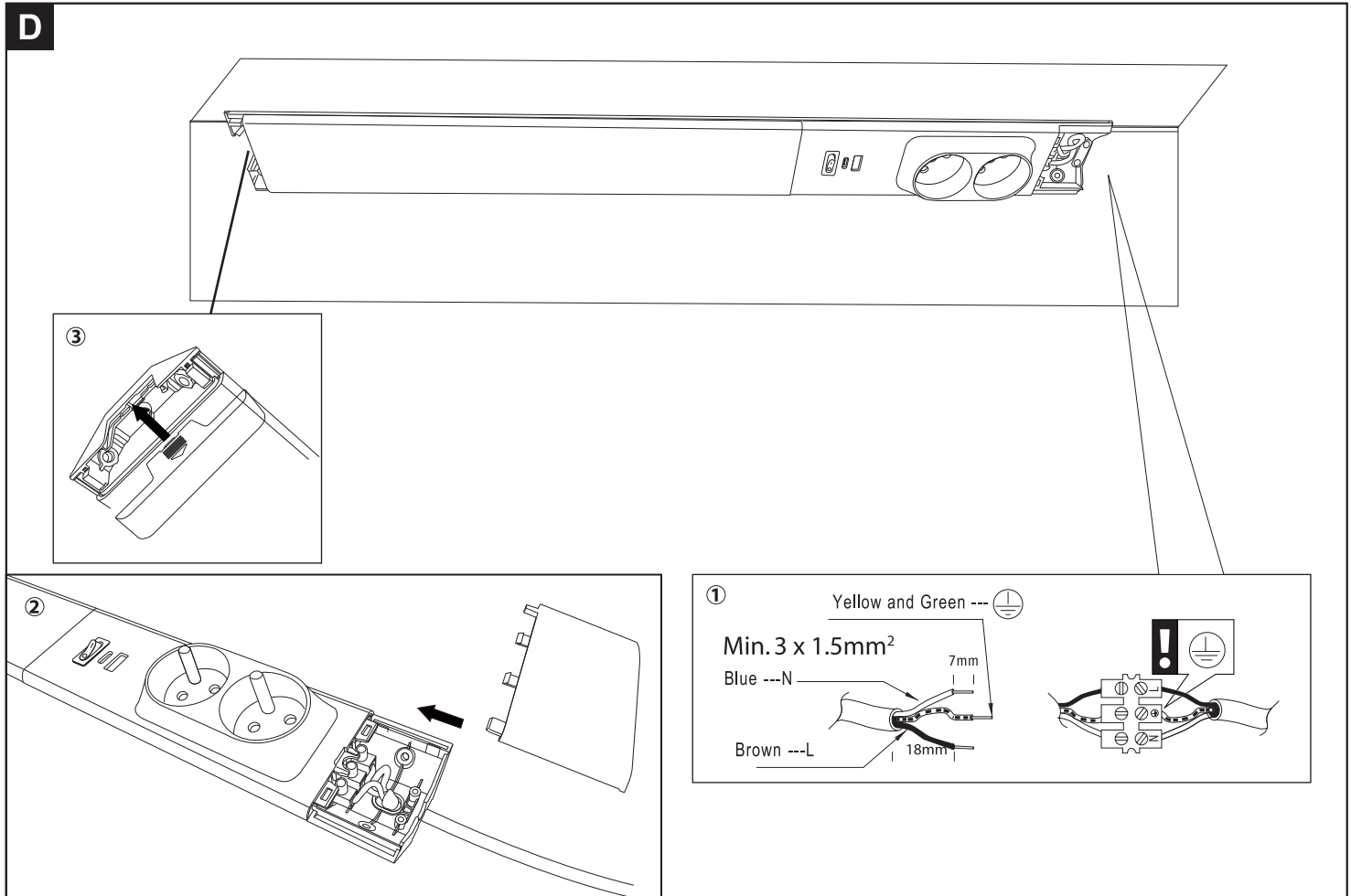


- 1.If one surface is wooden and the other is non-wooden surface, please refer B1-1 and B1-2.
- 2.If both surface are wooden, pls refer B2.

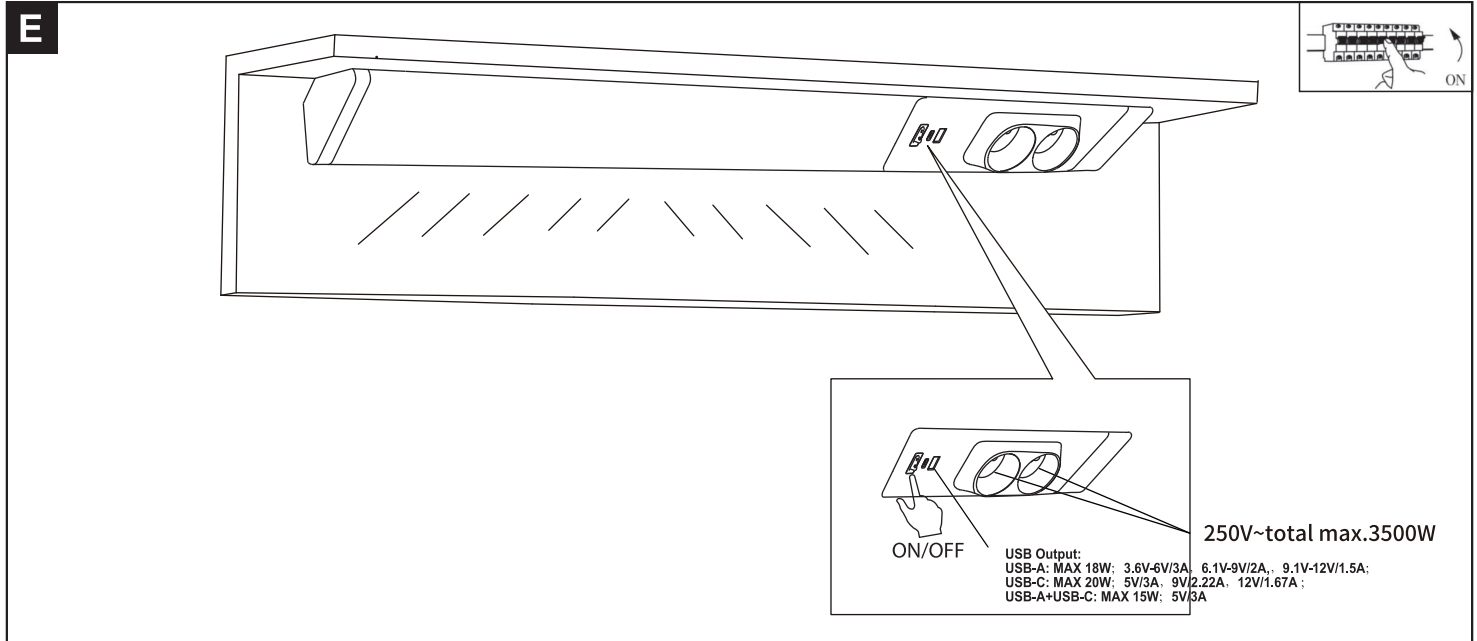
a  X2 For non-wooden surface

b  X4 For wooden surface

D



E



Luminaire: 220-240V~ 50/60Hz 18W

USB Output:

USB-A: MAX 18W; 3.6V-6V/3A, 6.1V-9V/2A, 9.1V-12V/1.5A;

USB-C: MAX 20W; 5V/3A, 9V/2.22A, 12V/1.67A ;

USB-A+USB-C: MAX 15W; 5V/3A

Charging protocol compatibility

USB_C interface compatibility: PD2.0/3.0, QC3.0, QC2.0 , Apple2.4A, DCP-1.5A,

Huawei FCP fast charge protocol;

USB_A interface compatibility: Apple2.4A, QC3.0, QC2.0, DCP-1.5A,

SamsungAFC quick charge protocol.

2 Socket-Outlets:Max.3500W